



**REACH Cut Planner**  
**Reduce fabric waste.**  
**Save time and win new customers.**

**REACH**  
Technologies



# Bringing in the best practices in Cutting Room Management.

Optimizing fabric consumption. Improving process capabilities. Cutting down cycle times

- **Automated Marker Allocation**
  - **Automated Plies Allocation**
    - **Automated Spread Planning**
      - **Automated Rolls Management**

RCP enables you to  
**Win New Customers** by significantly  
reducing your fabric consumption and thereby  
making your products competitive.

You wonder how many overseas factories quote  
US\$ 3.42 for the same product which you  
quote US\$ 6.8

You realize you have probably been losing some  
orders because your pricing hasn't been competitive  
enough.

If only you could avoid high costs getting built into  
the product through inefficiencies.

Is there some way you could reduce fabric  
consumption?

Then you could win those orders you've been losing.

RCP enables you to  
**Ship Your Orders On Time**  
by eliminating time consuming manual calculations  
and manual errors in the Cutting Room.

You wonder why so many shipments are late.

You wonder how many times, delays in the Cutting Room  
have delayed the Order.

You wonder if there is a way you can have greater control  
of the processes in the Cutting Room.

You wonder if there is a way to cut  
orders in the shortest possible time and  
at the same time without wasting fabric.

You wonder if there is a way to eliminate the time  
consuming calculations for various shades and widths.

You wonder if there is a way to eliminate manual  
errors in calculation and consequent delays.

RCP enables you to **Translate Individual  
Knowledge to Organizational Knowledge**

by automating the cut planning process and thereby  
safeguarding you against employee turnover.

Does your Cut Planner go on leave sometimes?

When he/she does go on leave, does it have an  
impact on Order execution time?

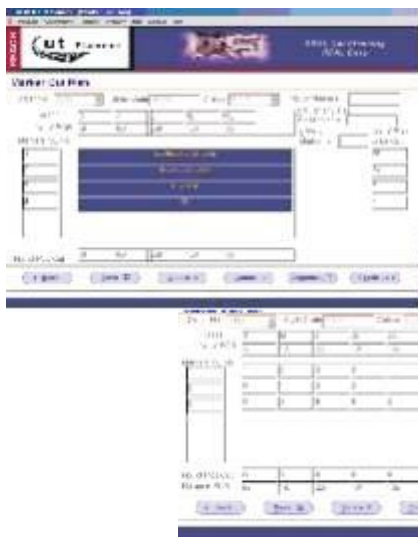
Is there a possibility of his/her leaving the  
Organization sometime?

When he/she leaves, will it hurt?

Will he/she walk away with the knowledge and skills?

Does your Organization have mechanisms to translate  
Individual Knowledge to Organizational Knowledge?

- **REAL Cut Planning**
- **REAL Easy**



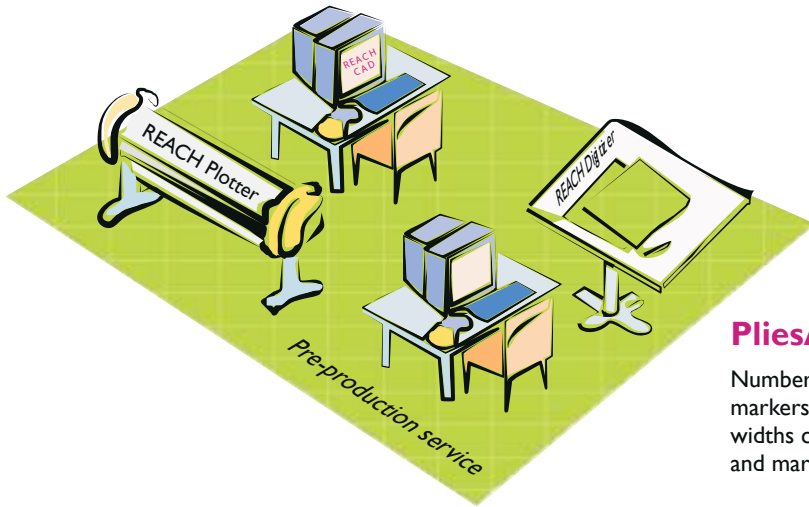
## Marker Cut Plan

Optimum marker combination to cut an order as well as number of plies to be cut for each marker.

Option for user defined marker combination.

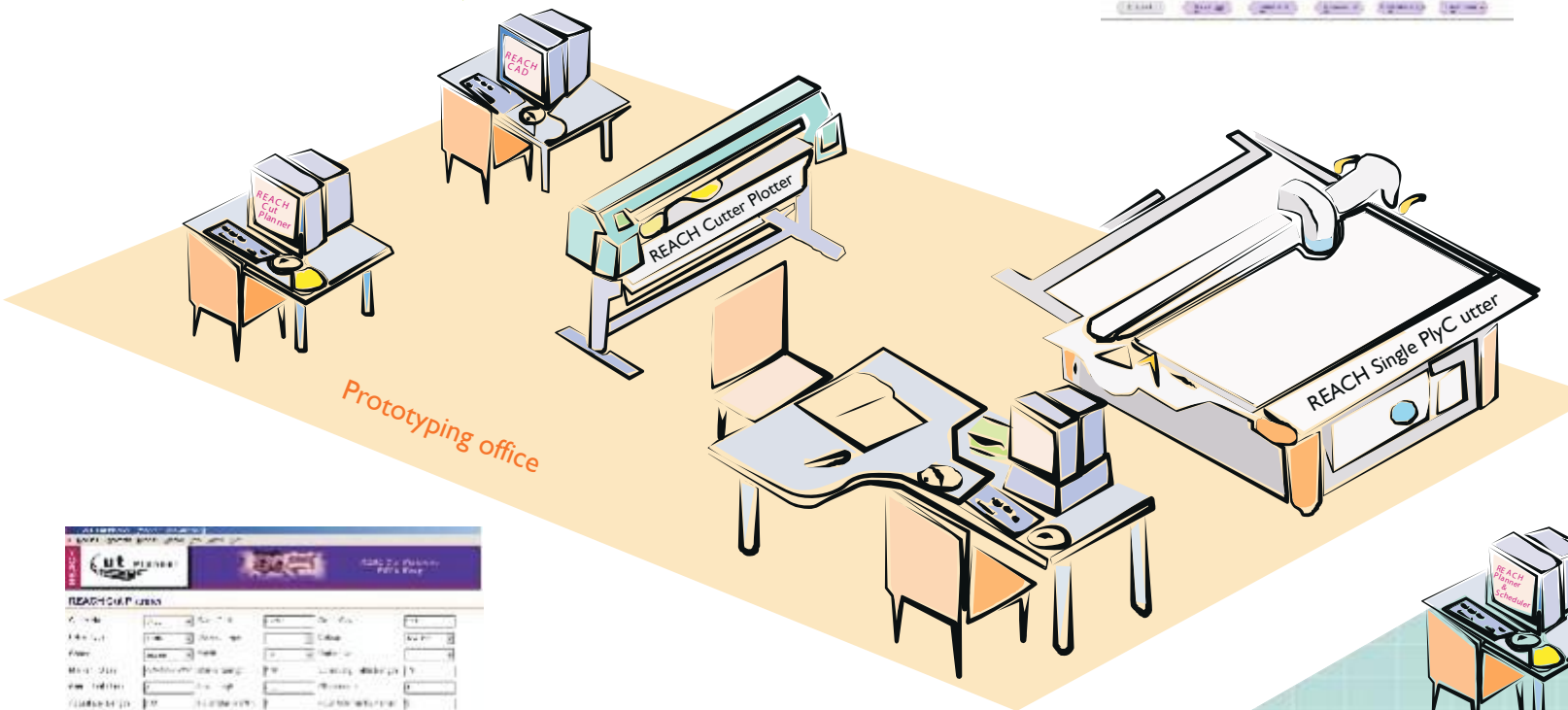
## Fabric Database

Fabric accountability and availability at any point of time.



## Plies Allocation

Number of plies to be cut from different markers, various shades and various widths considering the available fabric and marker ratio.



## Rolls Management

A high end algorithm identifies the exact roll and the number of plies to be cut so that end of fabric roll wastage is minimized.



## Spread Planning

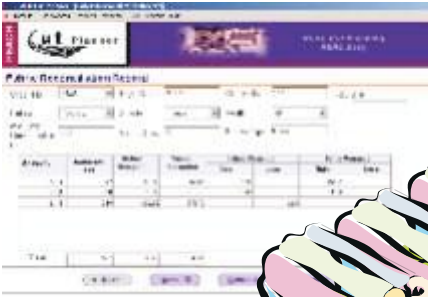
Number of lays to be spread for a particular marker depending on maximum number of plies that can be cut in a single spread.



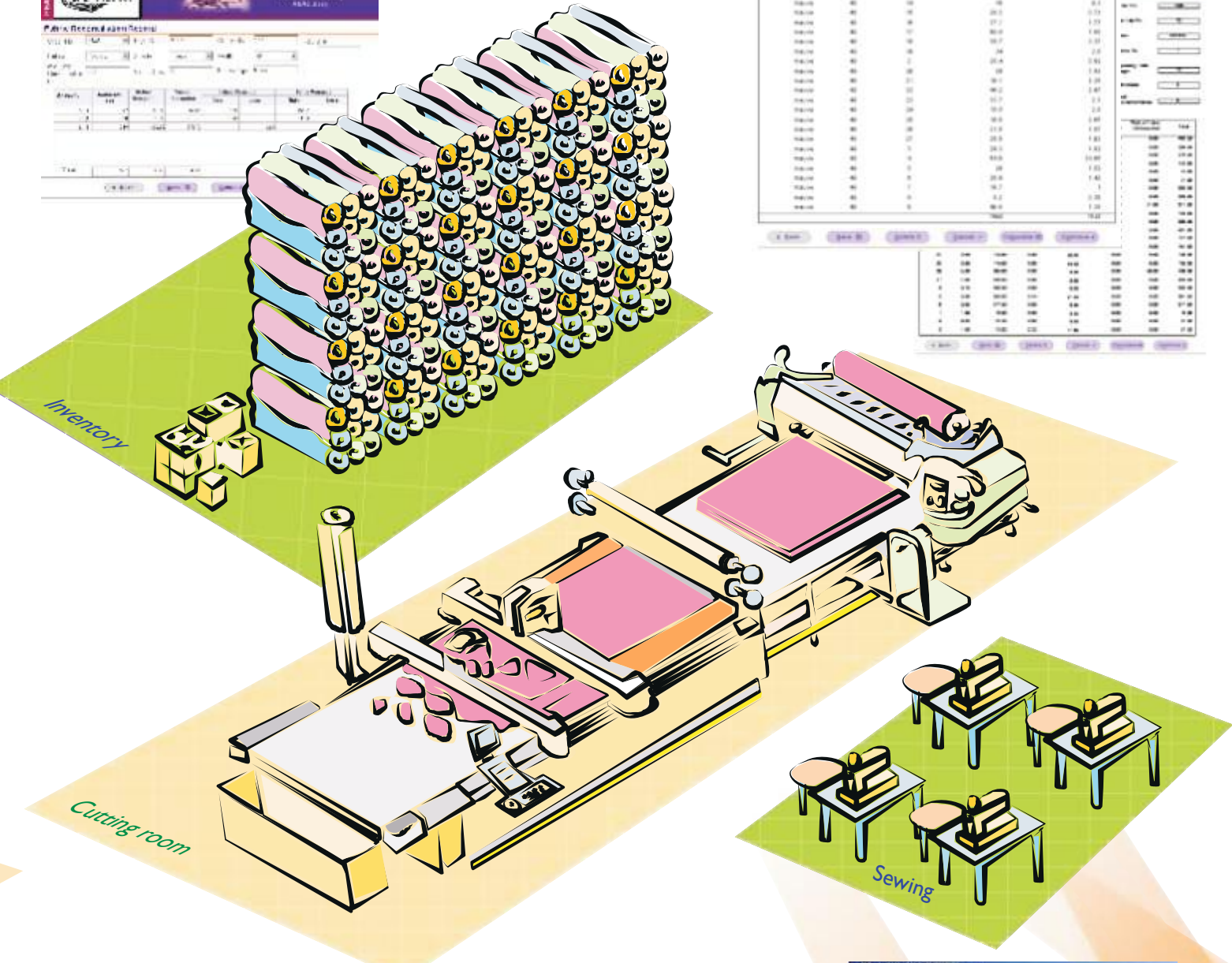
Detailed reports are generated to be given to various departments.

**Fabric Reconciliation Record**

Profit and loss analysis of a particular order.



| Order No. | Fabric Name | Color  | Width | Length | Weight | Area  | Volume |
|-----------|-------------|--------|-------|--------|--------|-------|--------|
| 1001      | Blue        | Blue   | 150   | 100    | 1.5    | 15000 | 15000  |
| 1002      | Red         | Red    | 150   | 100    | 1.5    | 15000 | 15000  |
| 1003      | Green       | Green  | 150   | 100    | 1.5    | 15000 | 15000  |
| 1004      | Yellow      | Yellow | 150   | 100    | 1.5    | 15000 | 15000  |
| 1005      | Purple      | Purple | 150   | 100    | 1.5    | 15000 | 15000  |
| 1006      | Orange      | Orange | 150   | 100    | 1.5    | 15000 | 15000  |
| 1007      | Pink        | Pink   | 150   | 100    | 1.5    | 15000 | 15000  |
| 1008      | White       | White  | 150   | 100    | 1.5    | 15000 | 15000  |
| 1009      | Black       | Black  | 150   | 100    | 1.5    | 15000 | 15000  |
| 1010      | Grey        | Grey   | 150   | 100    | 1.5    | 15000 | 15000  |



**Fabric Reconciliation Manager**

Variation from plan is noted, so as to monitor upto the last centimeter of the fabric being consumed.

To analyse the actual costing of the order for each spread.

| Order No. | Fabric Name | Color  | Width | Length | Weight | Area  | Volume |
|-----------|-------------|--------|-------|--------|--------|-------|--------|
| 1001      | Blue        | Blue   | 150   | 100    | 1.5    | 15000 | 15000  |
| 1002      | Red         | Red    | 150   | 100    | 1.5    | 15000 | 15000  |
| 1003      | Green       | Green  | 150   | 100    | 1.5    | 15000 | 15000  |
| 1004      | Yellow      | Yellow | 150   | 100    | 1.5    | 15000 | 15000  |
| 1005      | Purple      | Purple | 150   | 100    | 1.5    | 15000 | 15000  |
| 1006      | Orange      | Orange | 150   | 100    | 1.5    | 15000 | 15000  |
| 1007      | Pink        | Pink   | 150   | 100    | 1.5    | 15000 | 15000  |
| 1008      | White       | White  | 150   | 100    | 1.5    | 15000 | 15000  |
| 1009      | Black       | Black  | 150   | 100    | 1.5    | 15000 | 15000  |
| 1010      | Grey        | Grey   | 150   | 100    | 1.5    | 15000 | 15000  |

# REACH Cut Planner:

## The software tool for process control and fabric consumption optimization in the Cutting Room.



60-80% of apparel manufacturing cost is fabric cost. Any savings made in fabric impacts directly on product line profitability and overall organizational profitability.

REACH Cut Planner is the proven industry standard cut planning tool that lets you save significant quantities of fabric.

Finding the optimal allocation of plies and fabric rolls for a given set of style/color quantities presents a challenge to the best cut planners. The number of variables and possible solutions exceed normal human abilities but not that of REACH Cut Planner.

While REACH Cut Planner enables your saving significant quantities of fabric, this is NOT the only benefit.

They benefit from REACH Solutions

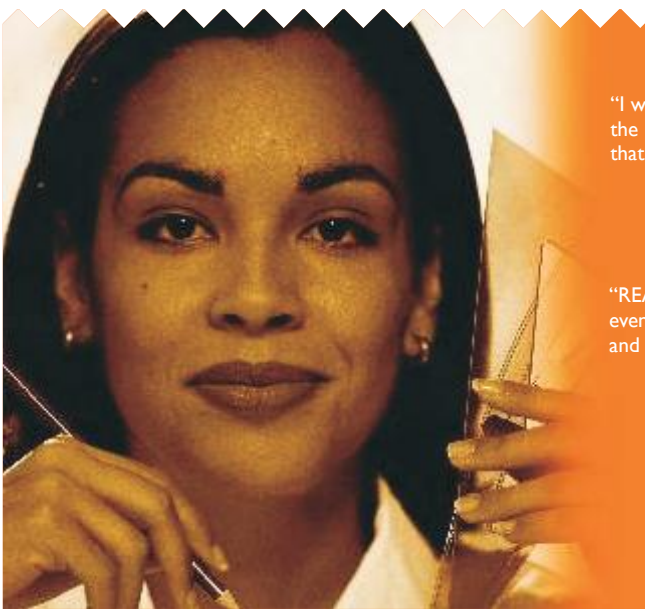


REACH Cut Planner has larger organizational impact by

- Enabling informed management decisions by capture and analysis of Cutting Room data.
- Improving productivity by automating the “thinking process” in the Cutting Room.

An organization is a set of interrelated processes. Process failures lead to loss of customers, loss of revenue and erosion of profits.

REACH Cut Planner will help you retain your customers, win you new customers, reduce your costs and ship your orders on time by giving you a platform for unparalleled process control in the Cutting Room.



“I would like to inform you that we have implemented the use of REACH Cut Planner in our factories, and that this is resulting in savings for our company.”

**Awais Noorani**  
Director, ZODIAC

“We are using REACH Cut Planner. RCP has effected reduction in end bits apart from greater process control in the cutting room.”

**Stephen Verghese**  
VP-Operations, Madura Garments

“REACH Cut Planner is the most sophisticated cut planning tool that I have seen. There isn't anything that comes even close in terms of features : RCP offers marker allocation, plies allocation, spread planning and rolls management and factors in different shades and different widths.”

**Shakunthala**  
Cut Planning Analyst, Gokaldas Images

# About REACH Technologies

REACH Technologies, a leader in Information Technology solutions for the global sewn products industry, offers pre-packaged products, custom solutions and consulting services to its clients.

REACH solutions add significant and sustainable advantages to clients enabling them to navigate today's turbulent marketplace. Built using best-of-breed technology platforms, our solutions are open, robust and scalable.

Well suited for both large organizations and small players, REACH solutions enable companies to cut costs, increase revenue, enhance quality, retain customers, and assist in anticipating opportunities by creating a real-time extended enterprise.



## REACH Merchandising Manager

is tailored to ensure your competitiveness in the sewn product manufacturing and merchandising marketplace where trends are created overnight; fashions change quickly and without warning. RMM streamlines sampling, merchandising, production and quality processes, integrating customer service with optimal utilization of resources across the enterprise.



## REACH CAD

REACH CAD is the software tool for pattern engineering, grading and marker planning for minimizing fabric consumption and supplying the sewing sections with accurate cut parts.

REACH CAD incorporates styling and functional features like dart intake, pleats turning and balance, grain line adjustments, flipping of patterns, pitch point placements, drill marking, size and order representation, fabric width adjustment, cutting of checks, plaids and stripes, garment balance, n-way size combinations, seam allowance adjustments, grading, nesting, etc. with user-friendly controls and applications.



## REACH Fashion Studio

is a multipurpose software for design, sales, sampling and printing departments of apparel, textile, leather, interior and home furnishing industries.

REACH Fashion Studio does 3D storyboard and cataloguing, texture mapping, colour reduction and cleaning, design and repeat, colourways, screens for printing and colour communication using pantone.